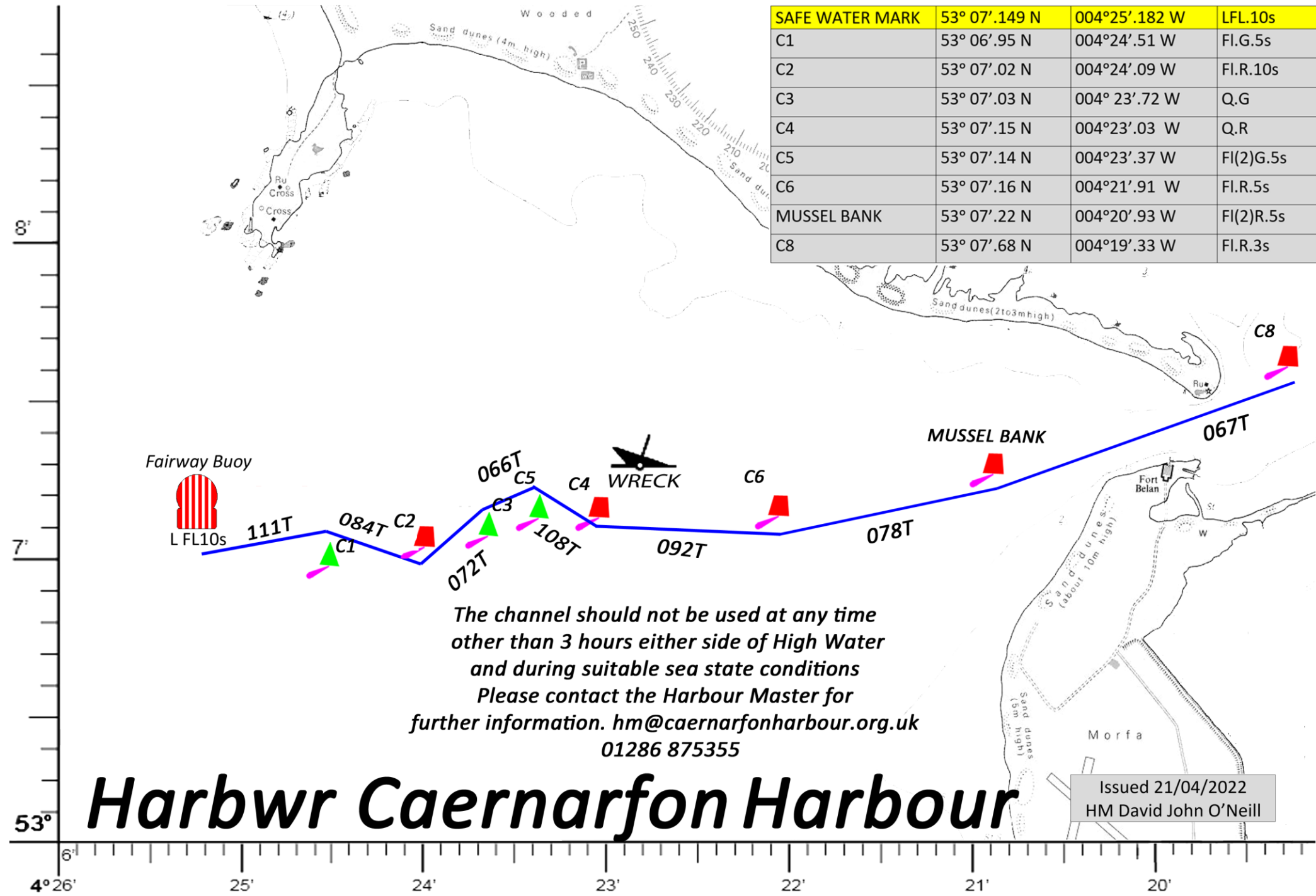


SAFE WATER MARK	53° 07'.149 N	004°25'.182 W	LFL.10s
C1	53° 06'.95 N	004°24'.51 W	Fl.G.5s
C2	53° 07'.02 N	004°24'.09 W	Fl.R.10s
C3	53° 07'.03 N	004° 23'.72 W	Q.G
C4	53° 07'.15 N	004°23'.03 W	Q.R
C5	53° 07'.14 N	004°23'.37 W	Fl(2)G.5s
C6	53° 07'.16 N	004°21'.91 W	Fl.R.5s
MUSSEL BANK	53° 07'.22 N	004°20'.93 W	Fl(2)R.5s
C8	53° 07'.68 N	004°19'.33 W	Fl.R.3s



*The channel should not be used at any time other than 3 hours either side of High Water and during suitable sea state conditions
Please contact the Harbour Master for further information. hm@caernarfonharbour.org.uk
01286 875355*

Harbwr Caernarfon Harbour

Issued 21/04/2022
HM David John O'Neill