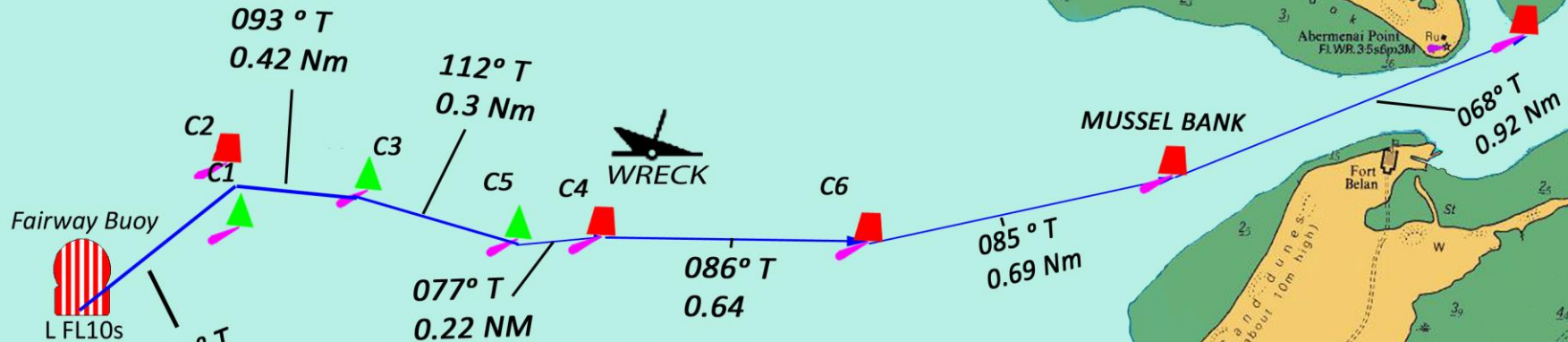


SAFE WATER MARK	53° 06'.950 N	004°25'.114 W	LFL.10s
<b>SAFE WATER MARK NOT ON STATION</b>			
C1	53° 07'.212 N	004°24'.491 W	Fl.G.5s
C2	53° 07'.301 N	004°24'.512 W	Fl.R.10s
C3	53° 07'.235 N	004° 23'.814 W	Q.G
C4	53° 07'.158 N	004°23'.030 W	Q.R
C5	53° 07'.131 N	004°23'.354 W	Fl(2)G.5s
C6	53° 07'.165 N	004°21'.918 W	Fl.R.5s
MUSSEL BANK	53° 07'.270 N	004°20'.900 W	Fl(2)R.5s
C8	53° 07'.620 N	004°19'.519 W	Fl.R.3s



*The channel should not be used at any time other than 3 hours either side of High Water and during suitable sea state conditions  
Please contact the Harbour Master for further information. [hm@caernarfonharbour.org.uk](mailto:hm@caernarfonharbour.org.uk)  
01286 875355*

# Harbwr Caernarfon Harbour

Issued 02/06/2020  
HM David John O'Neill

